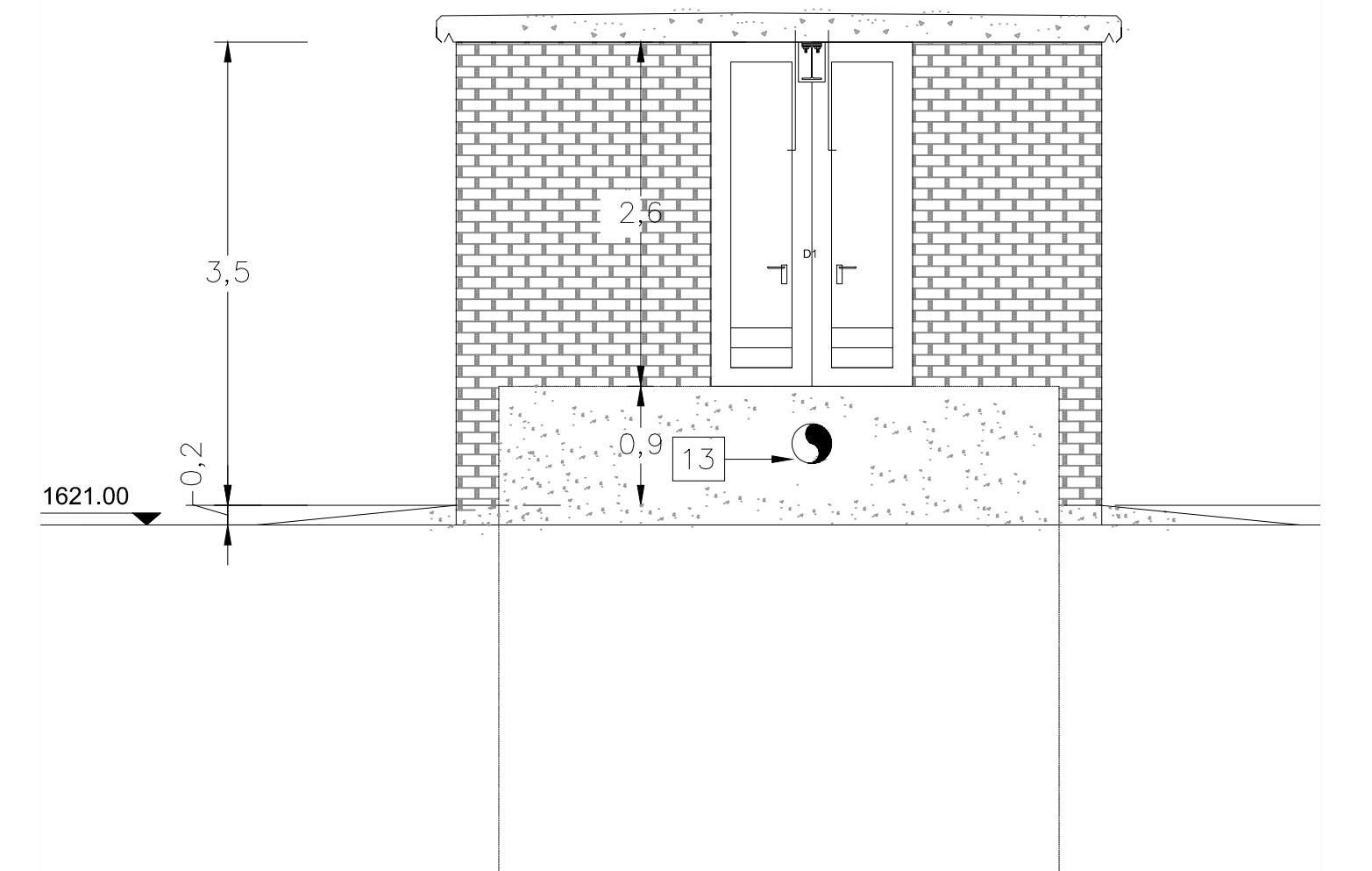


**SIDE ELEVATION**  
SCALE 1:50



**SIDE ELEVATION**  
SCALE 1:50



DOOR & WINDOW SCHEDULE			
MARK	SIZE	DESCRIPTION	QUANTITY
D1	1525 WIDE X 3060 HIGH	STEEL TRANSFORMER DOUBLE DOOR AND FRAME TYPE YVES (VERMIN PROOFED SINGLE LOUVRE) HEIGHT 3060mm INSTEAD OF STANDARD HEIGHT OF 2440mm. DOOR ALSO TO BE NOTCHED TO SUIT 203x133x30 CRAWL BEAM AND PAINTED TO SPECIFICATION.	1
D2	915 WIDE X 2135 HIGH	STANDARD STEEL TRANSFORMER SINGLE DOOR AND FRAME TYPE B (VERMIN PROOFED SINGLE LOUVRE) AND PAINTED TO SPECIFICATIONS.	1

ISSUED FOR  
TENDER

PROTECTED IN ACCORDANCE WITH WS  
9000, SECTION 13 (COATING SYSTEM PLUS  
PETROLATUM WRAPPING).

3. CORROSION PROTECTION

3.1 LINING: STEEL PIPES WILL BE  
PROTECTED INTERNALLY BY SOLVENT  
BORNE LIQUID EPOXY LINING WITH A  
MINIMUM THICKNESS OF 500 MICRONS.

3.2 COATING: EXTERNAL CORROSION  
PROTECTION WILL CONSIST OF A  
SINTAK FUSION BONDED  
POLYETHYLENE COATING FOR PIPES  
INSTALLED UNDERGROUND. PIPES  
INSTALLED IN CHAMBER, RESERVOIR  
AND IN PUMP STATION WILL HAVE A  
SOLVENT FREE EPOXY COATING  
WITH MINIMUM THICKNESS OF 500  
MICRONS.

3.3 FLANGES FACES: ALL FLANGES  
UNDERGROUND TO  
BE WRAPPED WITH DENSO-TAPE.

Project: <div style="border: 1px solid black; padding: 5px; text-align: center; margin-top: 5px;">JW14406 LINBRO PUMP STATION</div>			
Description: <div style="border: 1px solid black; padding: 5px; text-align: center; margin-top: 5px;">CHAMBER 12_PRV CHAMBER ELEVATIONS</div>			
Issued For: <div style="border: 1px solid black; padding: 5px; text-align: center; margin-top: 5px;">TENDER</div>			
Size:	Scale:	Sheet No:	Original Date:
A1	As Shown	2 OF 4	AUGUST 2023
Project No:		Drawing No:	Revision:
C01486		PS07	T0